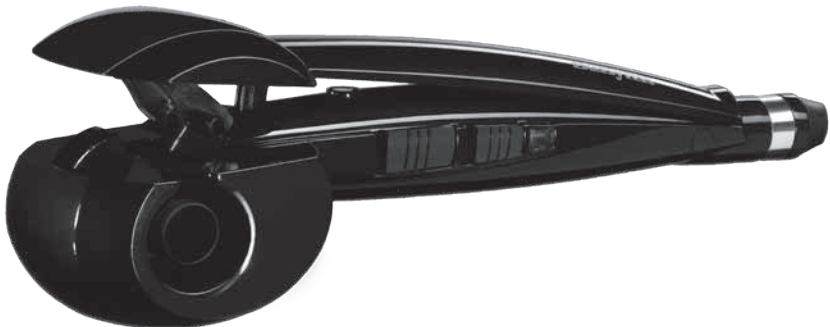


BaByliss[®]



CURL SECRET™

2667U

UK Patent and Application Nos. GB2455716; EP2242393; WO2012/080751; GB1210274.5

BaByliss[®]

BABYLISS CURL SECRET™

The BaByliss Curl Secret™ has revolutionary technology to effortlessly create beautiful, free-flowing curls with long-lasting effect. The hair is automatically drawn gently into the ceramic curl chamber where it is softly held and heated from all directions to form a curl. Simply release the styler from the hair to reveal the perfect curl.

FEATURES:

- Ceramic curl chamber for a smooth finish
- Professional heating system for fast curl formation
- 2 heat settings for all hair types
- 3 timer settings with audio beep indicator for different curl effects
- Alternating curl direction for a natural finish
- On/off switch
- Heat ready indicator
- 20min sleep mode function
- Auto shut off
- 2.5m swivel cord
- Heat protection mat
- Luxury pouch
- Ceramic barrel cleaning tool
- 3 year guarantee

IMPORTANT!

This styler is not designed for use on very long hair and should not be used on hair lengths below the bust.

This styler reaches high temperatures and is not suitable to be used on either synthetic or real hair extensions.

SAFETY CAUTIONS

- This appliance should only be used as described within this instruction booklet.

WARNING! Polythene bags over product or packaging may be dangerous. To avoid danger of suffocation, keep wrapper away from babies and children. These bags are not toys.

WARNING! Do not use this appliance near water contained in basins, bathtubs or other vessels.

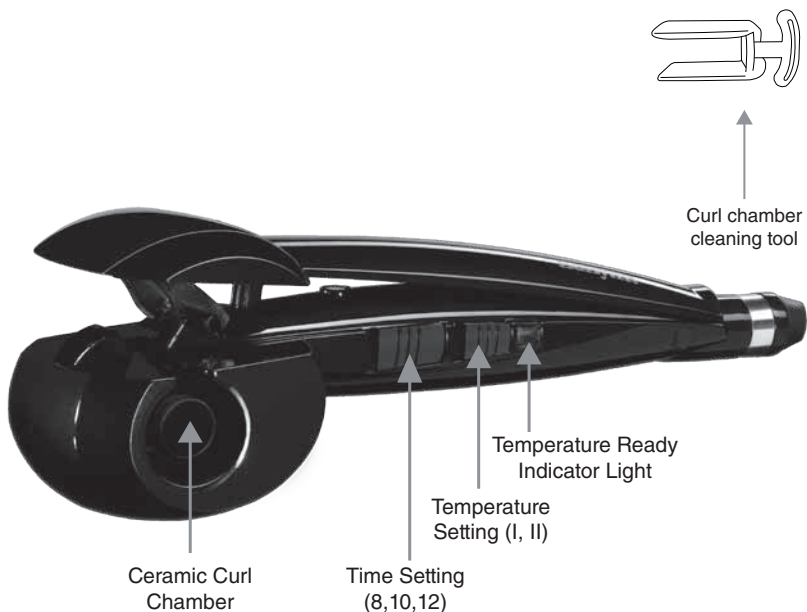


- Do not use the appliance in the bathroom.
- Do not immerse the appliance in water or other liquids.
- Always inspect the appliance before use for noticeable signs of damage. Do not use if damaged, or if the appliance has been dropped.
- In the event of damage, contact the Conair Customer Care Line (refer to 'UK After Sales Service' section for further information).
- Do not use the appliance if the lead is damaged. In the event of lead damage, discontinue use immediately. If the lead is damaged it must be replaced by the manufacturer. Return the appliance to the Customer Care Centre (refer to 'UK After Sales Service' section for further information). No repair must be attempted by the consumer.
- Do not leave the appliance unattended when switched on or plugged in.
- Do not place the appliance on any heat sensitive surface whilst in operation.
- In the event of the appliance left switched on, the

appliance will automatically shut off after 60 minutes. If you wish to continue using the appliance after this time, simply slide the switch to the relevant setting to turn the power on.

- Take care to avoid the hot surface of the appliance coming into direct contact with the skin, in particular the eyes, ears, face and neck.
- This appliance should not be used by adults who's reduced physical, sensory or mental capabilities, or whose lack of experience and knowledge, might cause a hazard, unless they have been correctly instructed to understand the safe use and hazards involved and are adequately supervised.
- Careful adult supervision is required when this appliance is used on or near children. Do not use on very young children.
- This appliance should not be used, cleaned or maintained by children. Keep out of reach of children.
- Always ensure that this appliance is kept out of the reach of children at all times, particularly during use and whilst cooling.
- Allow appliance to cool before storing away.
- After use, do not wrap the lead around the appliance as this may cause damage. Instead, coil loosely by the side of the appliance.
- This appliance complies with the requirements of Directives 2004/108/EC (Electromagnetic Compatibility) and 2006/95/EC (Electrical Safety of Domestic Appliances).

OPERATING FEATURES



OPERATING INSTRUCTIONS

The Curl Secret™ styler has been designed to easily create perfect curls with every use. It is easy to experiment with the different settings to achieve the desired results.

Always ensure the hair sections to curl are no bigger than 3cm wide. The type of curl will depend on the timer setting selected which dictates the amount of time the hair is kept inside the curl chamber to form the curl.

TEMPERATURE SETTINGS

There are 2 temperature settings; high and low. It is recommended to use the lower heat setting for fine, delicate or coloured hair and the higher heat setting for normal to thick hair.

- Setting I (low) - for delicate, fine or coloured hair
- Setting II (high) - for normal to thick hair

TIME SETTINGS

There are 3 timer settings with audio beep indicator. These different settings will give different curl effects. The longer the time the hair is held inside the curl chamber, the more defined the curl will be. But results will also vary according to hair type. Use the following as a guide.

- Setting 8 (8 seconds = 3 beeps) - for loose waves
- Setting 10 (10 seconds = 4 beeps) - for soft curls
- Setting 12 (12 seconds = 5 beeps) - for more defined curls

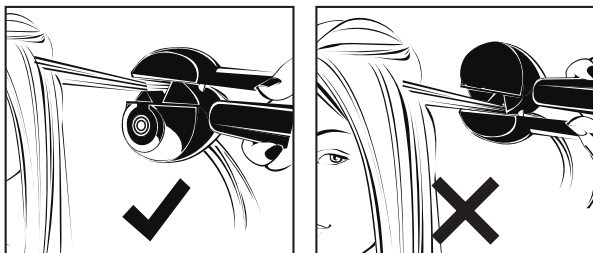
GENERAL

- Ensure hair is dry and combed through.
- Plug the styler into a suitable mains socket.
- Slide the temperature switch to the required heat setting.
- **IMPORTANT:** Always place the appliance on the heat resistant mat whilst the styler is heating up and during styling to protect work surfaces.
- The hair needs to be dry and combed through.
- Separate a clean section of hair, around 3cm wide. When working with naturally curly or longer length hair, use smaller sections.

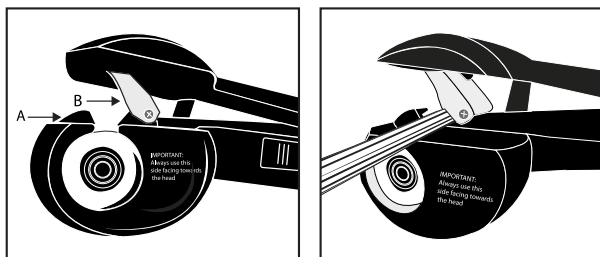


- Always insert the styler into the hair with the open part of the curl chamber facing towards the head.

For longer length hair, the styler will need to be inserted further down the hair section to ensure the hair is drawn into the curl chamber efficiently.

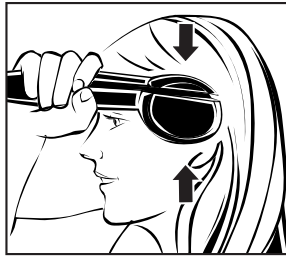
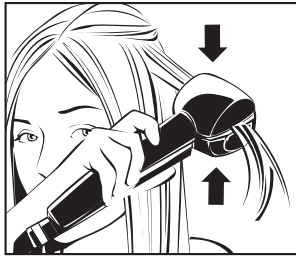


- **Caution.** If the styler is used incorrectly, in certain instances a slight tangle can occur. Should a tangle occur, firstly turn the styler off and desist from pulling the styler away from the hair. Gently tease the hair out from the curl chamber until fully released.
- **IMPORTANT!** The neat section of hair must be inserted into the opening, beyond the hair stopper (A) until it reaches the transparent guide (B).

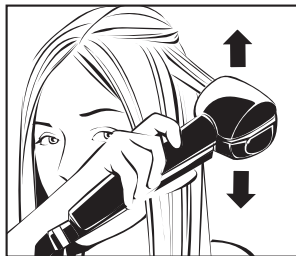


- **IMPORTANT!** Firmly close the handles together to allow the hair to be drawn into the curl chamber.
- Keep the styler in position and once the hair has been drawn into

the curl chamber, the styler will start beeping. Continue to hold the handles closed until the styler sounds four quick beeps in succession, this is to indicate the time is up.



- Release the handles fully and smoothly pull the styler away from the head to reveal the curl.



- To allow the curl to set, do not comb or brush the hair until it cools.
- Repeat around the head until you have the amount of curls desired.

SLEEP MODE

This appliance has an automatic sleep mode feature. If the appliance is not used for more than 20 minutes the temperature will automatically drop down by 50°C. If you wish to continue using the appliance after this time, simply close then release the handles and it will return to the temperature setting you were using it on.

AUTO SHUT OFF

This appliance has an automatic shut off feature for added safety. If the appliance is switched on for more than 60 minutes continuously, it will automatically switch off. If you wish to continue using the appliance after this time, simply slide the switch to the relevant setting to turn the power on.

Heat Protection Mat

IMPORTANT!

- Always place the appliance on the heat resistant mat whilst the styler is heating up and during styling to protect work surfaces.
- For further heat protection after use, wrap the heat mat around the appliance before storing away.

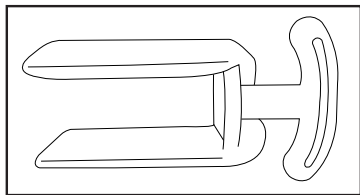
Luxury Pouch

The inside lining of the pouch is heat resistant, allowing the styler to be stored away immediately after use.

IMPORTANT! Do not place the appliance onto the outside of the pouch when it is still hot, as the outside material is not heat resistant. Use the heat protection mat to protect work surfaces.

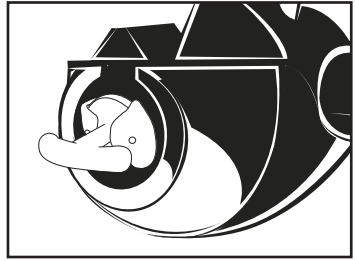
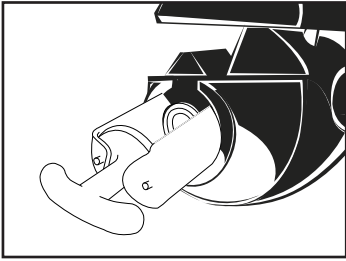
CLEANING & MAINTENANCE

It is very important to use the cleaning tool included to regularly clean the curl chamber. This will prevent a build-up of product to ensure the curls produced are always perfectly formed.

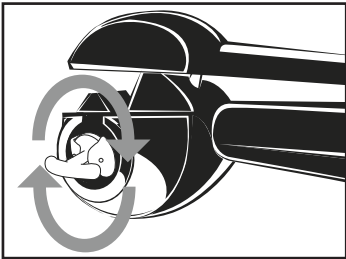


- Ensure the appliance is switched off, unplugged and cool.

- Lightly dampen the cleaning tool with warm water and mild detergent or soap.
- Insert the tool fully into the curl chamber cavity as per the diagrams below.



- Rotate the tool around the curl chamber to remove any build-up of product.



- Ensure the appliance has dried thoroughly before re-using.
- The cleaning tool can be used numerous times; just remove the felt pads, rinse them in warm soapy water and leave to dry before using again.

IMPORTANT: Do not immerse the appliance in water or other liquids. To help keep your styler in the best possible condition follow the steps below:

- Do not wrap the lead around the appliance; instead coil the lead loosely by the side of the appliance when storing away.
- Do not use the appliance at a stretch from the power point.

- Always place the appliance on the heat resistant mat whilst styling hair to protect work surfaces.
- For further heat protection after use, wrap the heat mat around the appliance before storing away.
- Always unplug after use.

UK GUARANTEE

This BaByliss appliance is guaranteed for consumer use for 3 years. This guarantee covers defects under normal use from date of purchase and ceases to be valid in the event of alteration or repair by unauthorised persons. If the appliance does not perform satisfactorily due to defects in materials or manufacture, it will be repaired or replaced through Conair UK After Sales Service. The Conair Group Ltd reserves the right to amend terms and specifications without prior notice.

This guarantee in no way affects your statutory rights.

UK AFTER SALES SERVICE

For further advice on using the appliance, contact the Conair Customer Care Line on 0870 5 133191 (09:00 to 17:00 Monday to Friday) or email your enquiry to ukinfo@conair.com.


If you should need to return your appliance to us please send it to the following address:

Customer Care Centre
Conair Logistics
Unit 4
Revolution Park
Buckshaw Avenue
Buckshaw Village
Chorley
PR7 7DW

Please enclose your name and address, together with a copy of proof of purchase and details of the fault.

SAFE DISPOSAL




The  symbol on the product or on its packaging indicates that this product may not be treated as household waste. Instead it should be handed to an appropriate collection point for the recycling of Electrical and Electronic equipment. By ensuring this product is disposed of correctly, you will help prevent potential negative consequences for the environment and human health, which could otherwise be caused by inappropriate waste handling of this product. For more detailed information about the recycling of this product, please contact your local council office or your household waste disposal service.

UK WIRING INSTRUCTIONS

The wires in the mains lead are coloured in accordance with the following code:

BLUE = NEUTRAL

BROWN = LIVE

- The wire which is coloured BLUE must be connected to the terminal which is marked with the letter N.
- The wire which is coloured BROWN must be connected to the terminal which is marked with the letter L.
- Neither core should be connected to the earth terminal of a three pin plug marked with the letter E or .

This appliance comes fitted with a British Standard 13 amp type plug and a 5 amp fuse. It is important to always use a 5 amp fuse, should its replacement be required. If any other type of plug is used, a 5 amp fuse must be fitted at the distribution board.